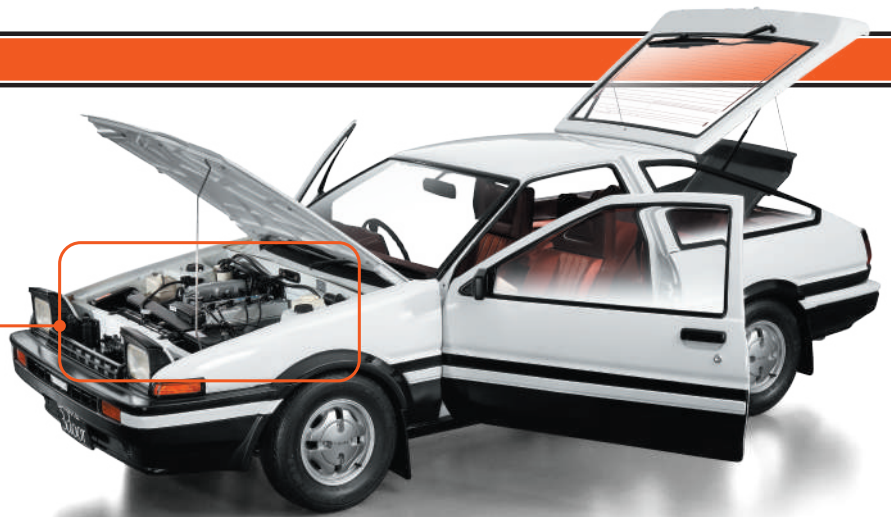


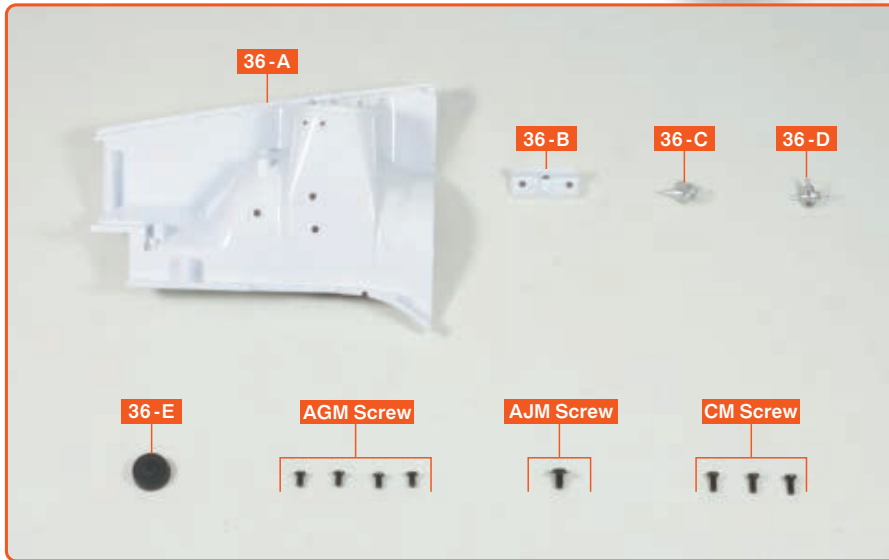
Issue 36

In this issue, we will first attach several parts to the right front fender apron, then fit it to the right-hand side of the engine section on the chassis assembled in Issue 35.



Assemble the Engine Bay (1)

※In this guide "Left" or "(L)", and "Right" or "(R)", refer to the direction as viewed from the driver's seat.



36-A Front Fender Apron (R)

36-B Front Fender Apron Bracket (R)

36-C Proportioning Valve

36-D Front Brake Hose Connector

36-E Front Suspension Support

AGM Screw (2.0×3mm) ×4+Spare

AJM Screw (2.3×5.5mm) ×1+Spare

CM Screw (2.0×4mm) ×3+Spare

View the follow-along video

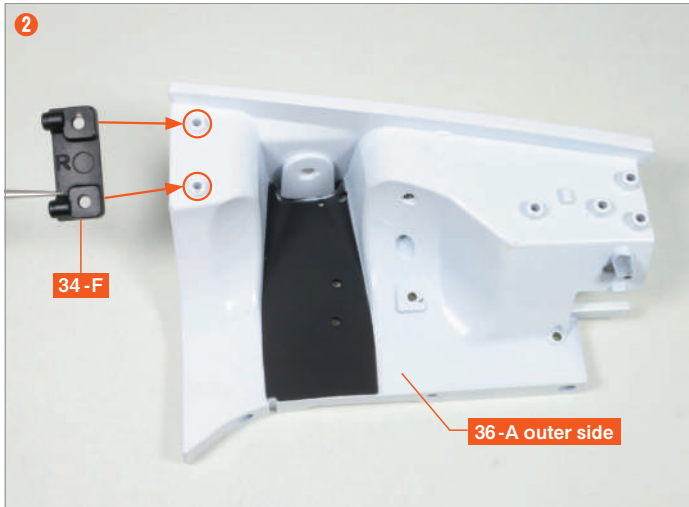


※Due to the model's design, the shapes of some parts may differ from those of the real vehicle.

step 1 Attach the parts to the 36-A Front Fender Apron (R)



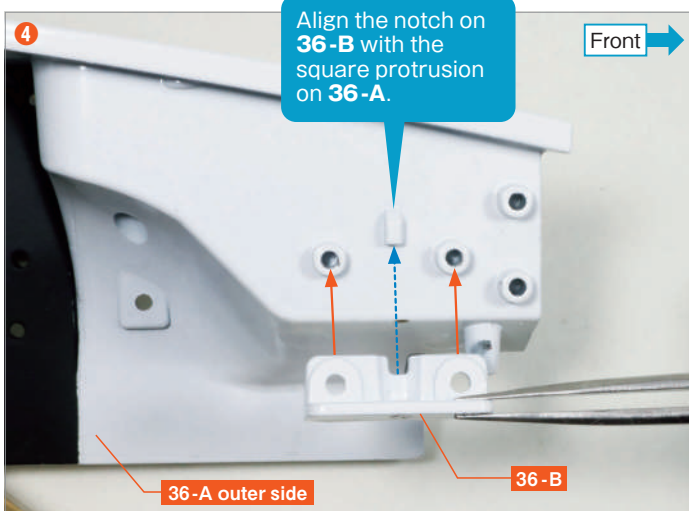
Prepare the **34-F Bulkhead Bracket (R)** and two **CM screws** that were set aside in Issue 34. The remaining two **CM screws** will be used in a later issue, so please keep them in a safe place to avoid losing them.



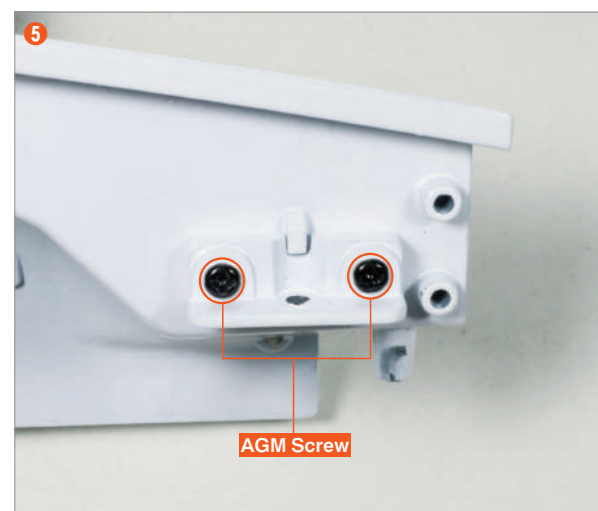
Fit the recess on the reverse side of **34-F** onto the protrusion on the outer screw hole of the **36-A Front Fender Apron (R)**.



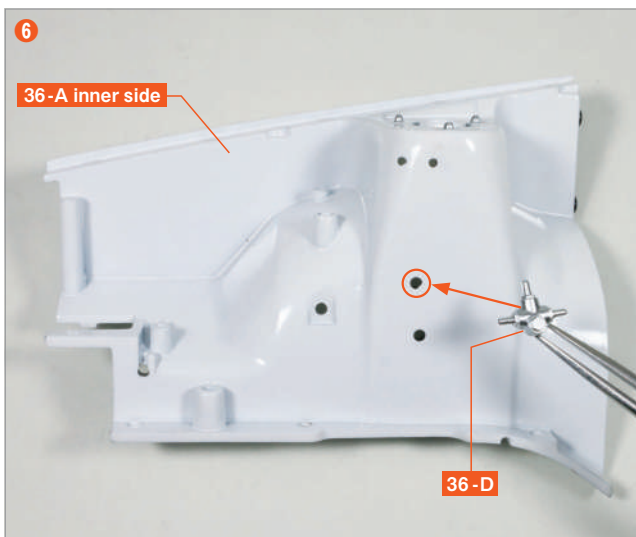
Secure the two points with **AGM screws**.



Fit the recess on the reverse side of the **36-B Front Fender Apron Bracket (R)** onto the protrusion on the front screw hole on the outer side of the **36-A Front Fender Apron (R)**.

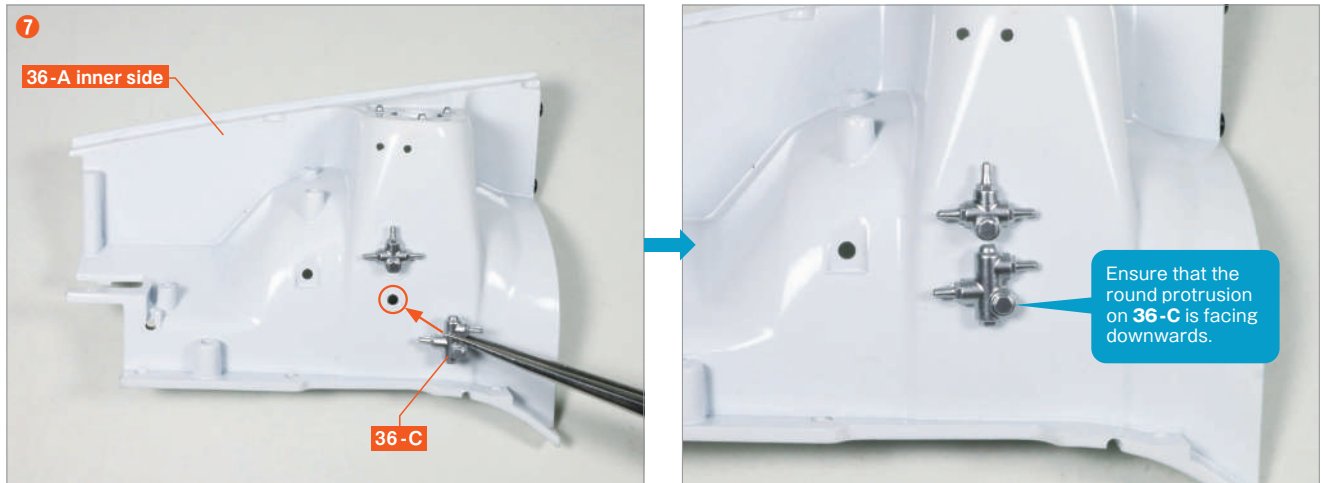


Secure the two points with **AGM screws**.



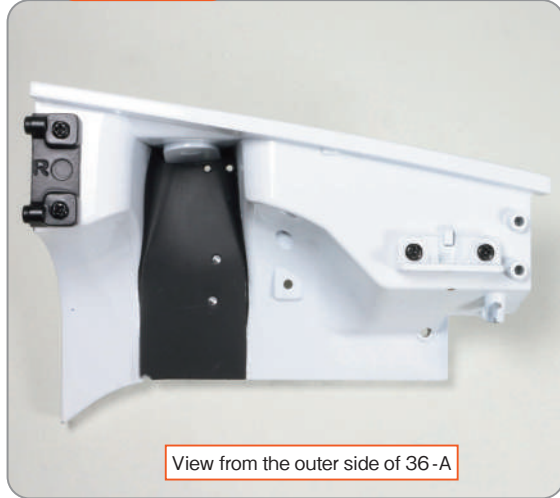
Turn **36-A** over and fit the protrusion of the **36-D Front Brake Hose Connector** into the hole on the inner side.



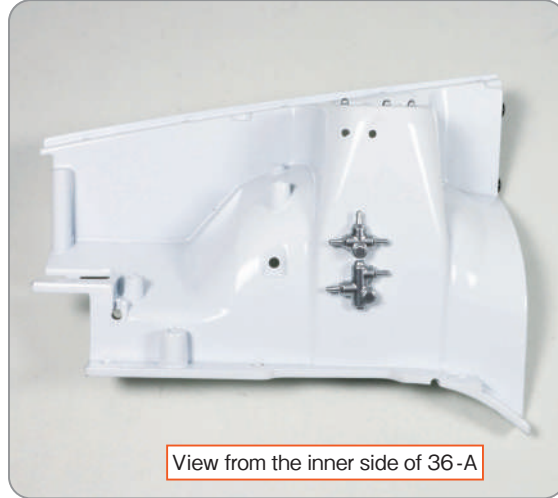


Fit the protrusion of the **36-C Proportioning Valve** into the hole on the inner side of **36-A**.

Step complete



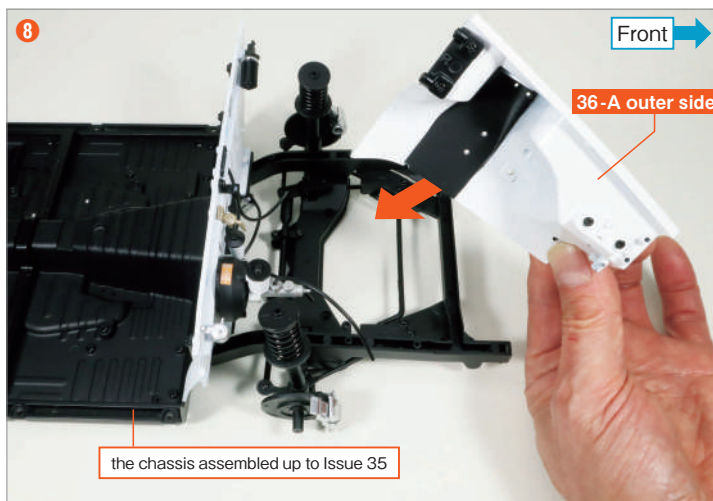
View from the outer side of 36-A



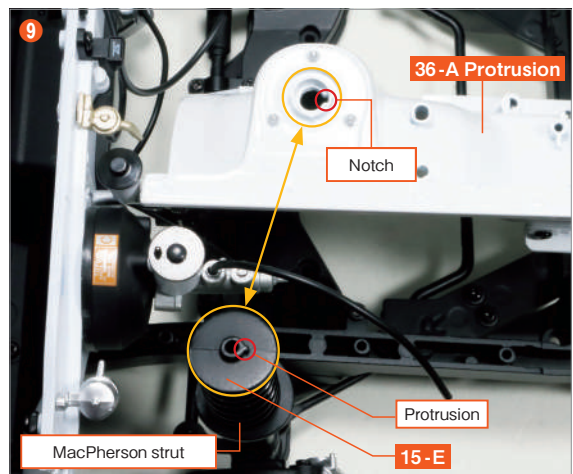
View from the inner side of 36-A

If the parts are too tight and difficult to insert in Steps 6 and 7, slightly enlarge the holes in **36-A** using a diamond file or similar tool, or carefully trim the protrusions on the parts with a knife. However, take care not to remove too much material, as this may make the fit loose and cause the parts to come off easily. If any of the parts come loose easily, apply a small amount of all-purpose adhesive when fitting them into place.

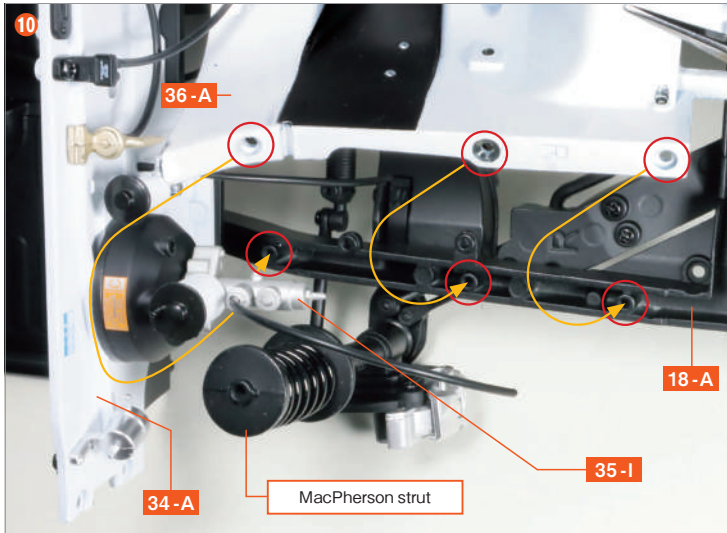
step 2 Attach the Front Fender Apron to the Chassis



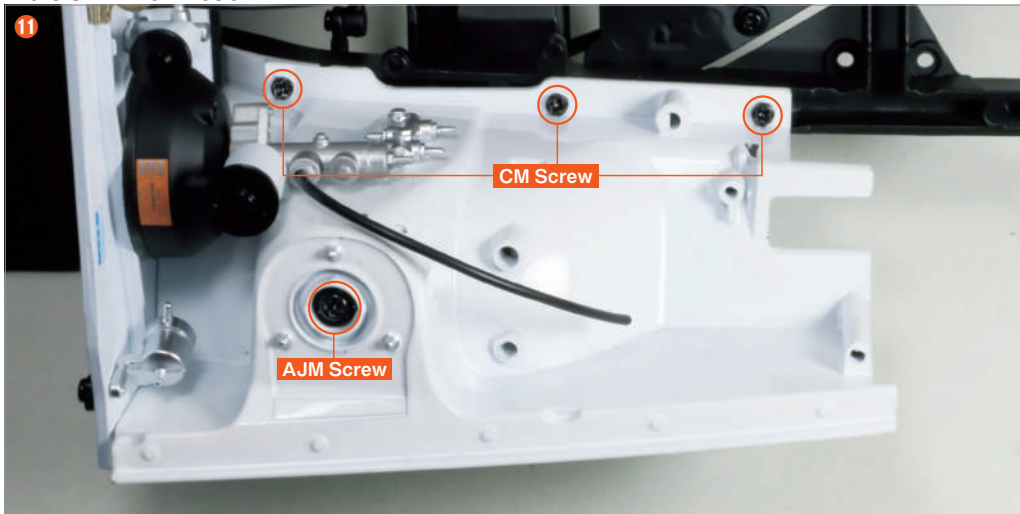
Prepare the chassis assembled up to Issue 35, and position the right front fender apron assembled in Step 1 on the right-hand side in front of the bulkhead.



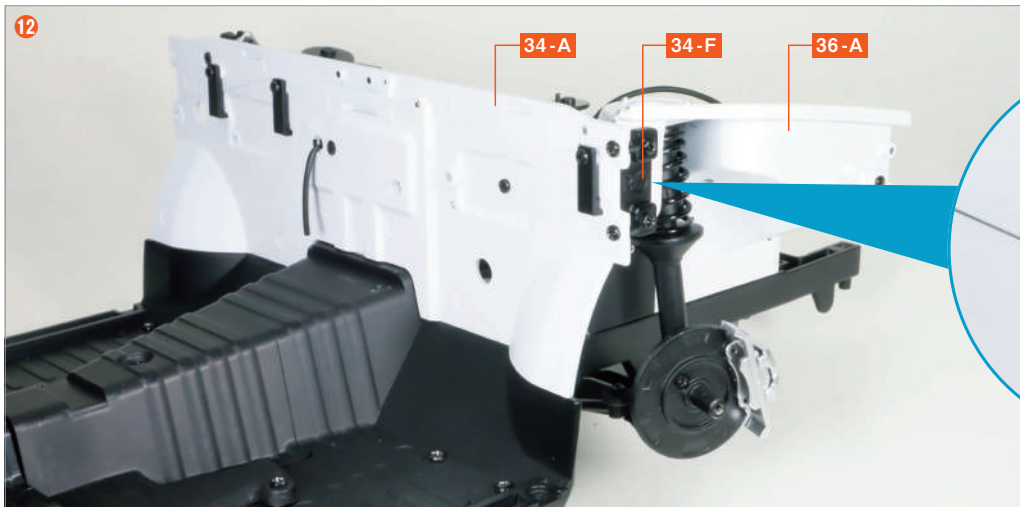
First, rotate the entire right MacPherson strut assembly so that the protrusion at the top of the **15-E Strut Upper Mount (R)** is aligned with the notch in **36-A**.



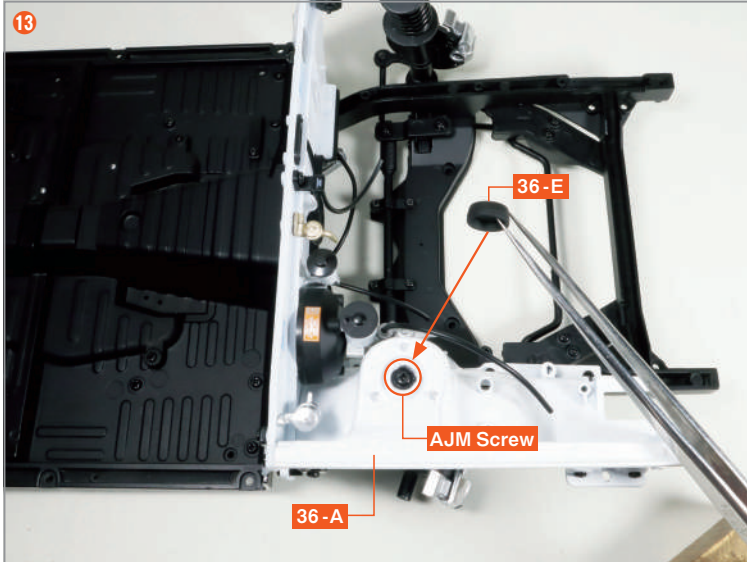
Next, insert the lower section of **36-A** between the MacPherson strut and the **35-I Brake Master Cylinder**, then fit the recesses on **36-A** onto the three protrusions on the screw holes on the right-hand side of the **18-A Front Subframe**. Also fit the two protrusions on the screw holes of **34-F** into the two recesses on the screw holes in the **34-A Bulkhead**.



Secure one point with an **AJM screw** and three points with **CM screws**.



Align the protrusions on the screw holes of **34-F** with the recesses on the screw holes of **34-A**, then secure the two points with the **CM screws** that were set aside in Issue 34.



Fit the recess on the reverse side of the **36-E Front Suspension Support** onto the protrusion surrounding the **AJM screw** on **36-A**.

Complete

The assembly for Issue 36 is complete. The front fender apron has now been fitted to the right-hand side of the engine bay. In Issue 37, you will attach additional parts to this front fender apron.



SIDE

